



# 3 & 4-Way Multi-Port Full Port Flanged Ball Valve

**M30**  
ANSI 150/300  
2" - 6"

## Locking Tab Washer

*Keeps Lock nut from loosening in High Cycle Automated Applications*

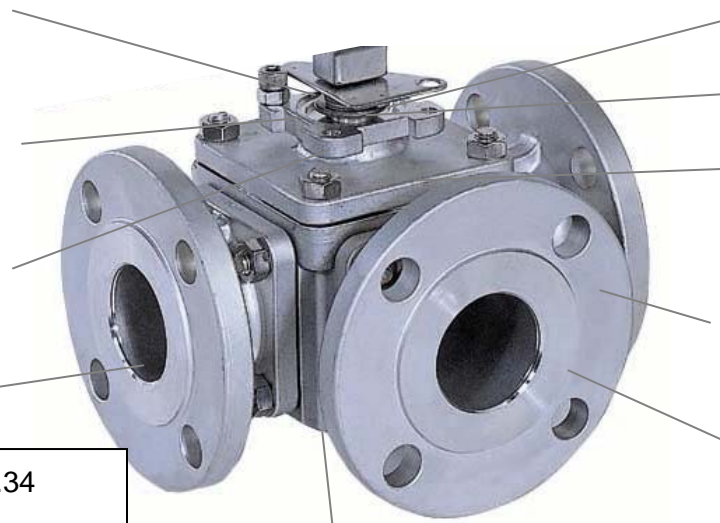
## ISO 5211 Mounting Pad

*Allows direct mounting of actuation to valve, reducing hysteresis*

## Patented "Sealmaster" Double Stem Sealing System

## Full Bore

- Designed to ANSI B 16.34
- Blow-Out Proof Stem
- Anti-Static Design.
- Optional Fire Safe Design



**Live Loaded Stem Packing. Anti-Static Stem.**

**Solid 316 Stainless Steel Ball and Stem**

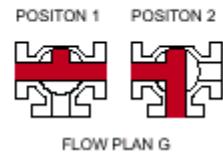
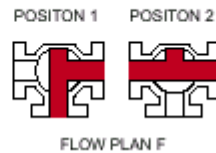
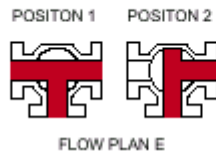
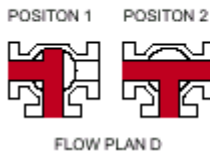
**Investment Cast CF8M Body**

**4 Seats for Rigid Ball Support and Positive Shut Off**

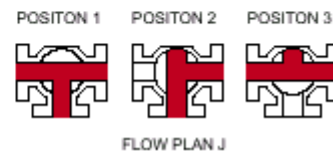
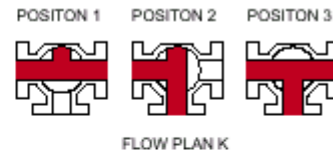
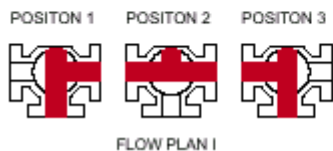
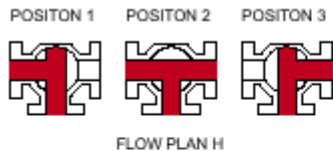
**Carbon Filled TFE Bottom Bearing**

All T-Port Flow Patterns can be changed in the field without disassembling valve

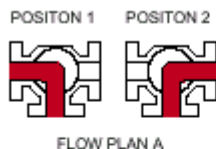
### T-PORT 90° TURN



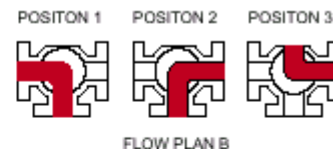
### T-PORT 180° TURN



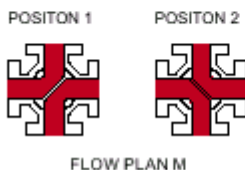
### L-PORT 90° TURN



### L-PORT 180° TURN

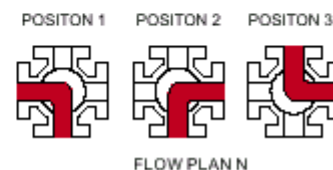


### LL-PORT 90° TURN



### L-PORT 180° TURN

**4- WAY VALVES**  
Optional Plans Available  
Using T, L and Standard Ball  
Consult Factory

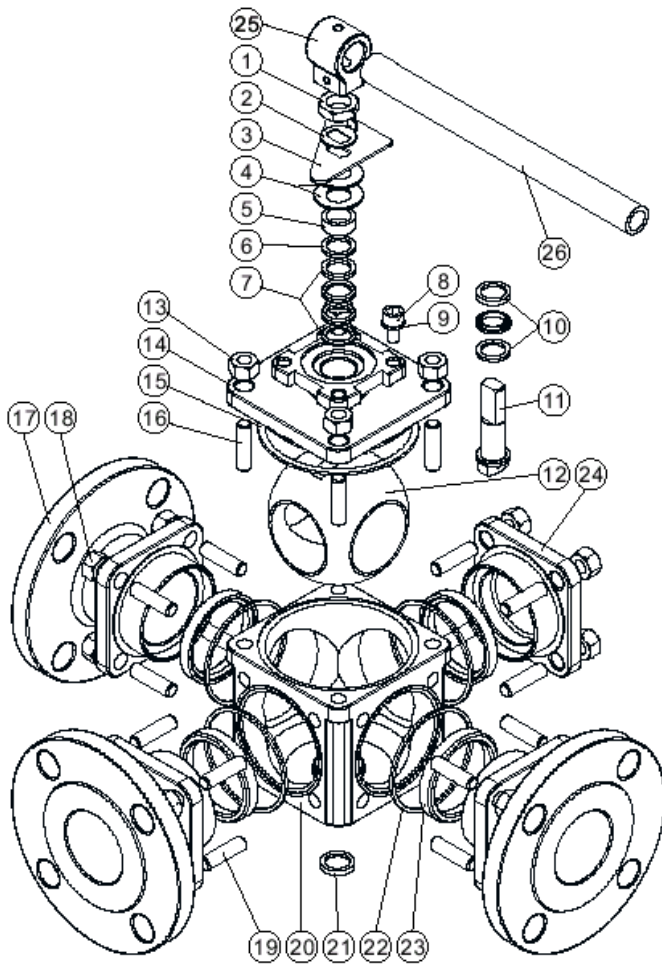


PMP Precision Valve Company Ltd. Is a progressive supplier of current products. The features, materials of construction and dimensional data as detailed in this bulletin are intended for your reference only, and should not be relied upon unless confirmed in writing by PMP Precision Valve Co. Ltd.. Certified dimensional drawings are available upon order receipt.

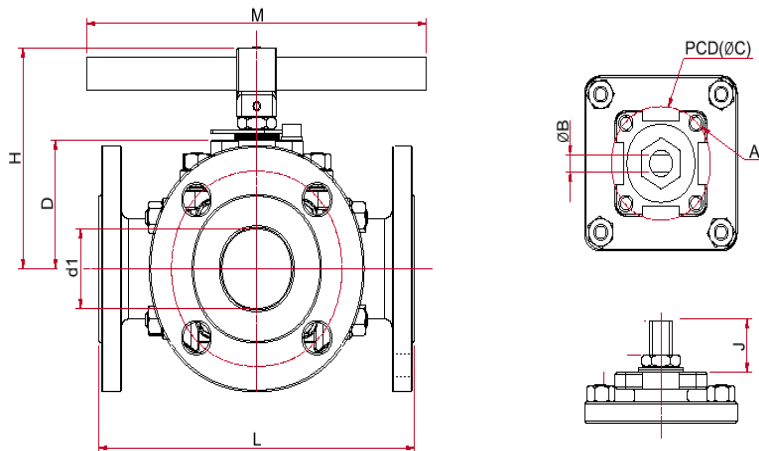


# 3 & 4-Way Multi-Port Full Port Flanged Ball Valve

**M30**  
ANSI 150/300  
2" - 6"



ITEM	PART	MATERIAL	QTY
1	HANDLE NUT	SS304 / S45C	1
2	LOCK WASHER	SS304	1
3	TRIANGLE STOPPER	SS304	1
4	BELLEVILLE WASHER	SS301 / WCB1075	1
5	GLAND	SS304	1
6	THRUST WASHER	50% PTFE/50% SS POWDER	1
7	V-RING STEM PACKING	PTFE	1 SET
8	STOP BOLT	A193 Gr.B8 / A193 Gr.B7	1
9	SPRING WASHER	SS304 / S45C	1
10	SEAL ARRANGEMENT	TFM 1600 SS316 50% PTFE / 50% SS POWDER	1 SET
11	ANTI-STATIC STEM	A276 TYPE 316	1
12	BALL	CF8M	1
13	NUT	A194 Gr.8 / A194 Gr. 2H	4
14	COVER	CF8M / WCB	1
15	COVER SEAL	PTFE	1
16	STUD	A193 Gr. B8 / A193 Gr. B7	4
17	FLANGE CAP	CF8M / WCB	3 or 4
18	NUT	A194 Gr.8 / A194 Gr. 2H	16
19	STUD	A193 Gr. B8 / A193 Gr. B7	16
20	BODY	CF8M / WCB	1
21	BALL SUPPORT BEARING	25% CARBON FILLED PTFE	1
22	BODY SEAL	PTFE	4
23	BALL SEAT	PTFE	4
24	*BLOCK CAP	CF8M / WCB	1
25	HANDLE ADAPTOR	CF8M	1
26	PIPE HANDLE	SS304	1



SIZE		2"	2-1/2"	3"	4"	6"
B	in	0.37	0.67	0.67	0.67	0.91
	mm	9.5	17	17	17	23
C	iso 5211	F07	F10	F10	F10	F12
	PCD	in	2.76	4.02	4.02	4.02
PCD	mm	70	102	102	102	125
	A		M8 / 8.7	M12 / 12.3	M12 / 12.3	M12 / 12.3
d1	in	1.97	2.56	3.15	3.94	5.98
	mm	50	65	80	100	150
D	in	3.15	3.82	4.25	5.08	8.46
	mm	80	97	108	129	215
H	in	5.37	6.38	7.32	8.39	10.71
	mm	136.5	162	186	213	272
M	in	11.81	19.69	19.69	25.59	31.50
	mm	300	500	500	650	800
J	in	0.93	1.63	1.63	1.87	2.56
	mm	23.5	41.5	41.5	47.5	65
L	in	9.06	11.42	12.20	13.78	18.90
	mm	230	290	310	350	480
CV	90°	106	171	255	409	1083
	180°	147	240	356	561	1509

PMP Precision Valve Company Ltd. Is a progressive supplier of current products. The features, materials of construction and dimensional data as detailed in this bulletin are intended for your reference only, and should not be relied upon unless confirmed in writing by PMP Precision Valve Co. Ltd.. Certified dimensional drawings are available upon order receipt.