



Electric Rotary Actuator Nema 4, 4x –CSA, CE,

OM
300-30000
LBS-IN

Enclosure

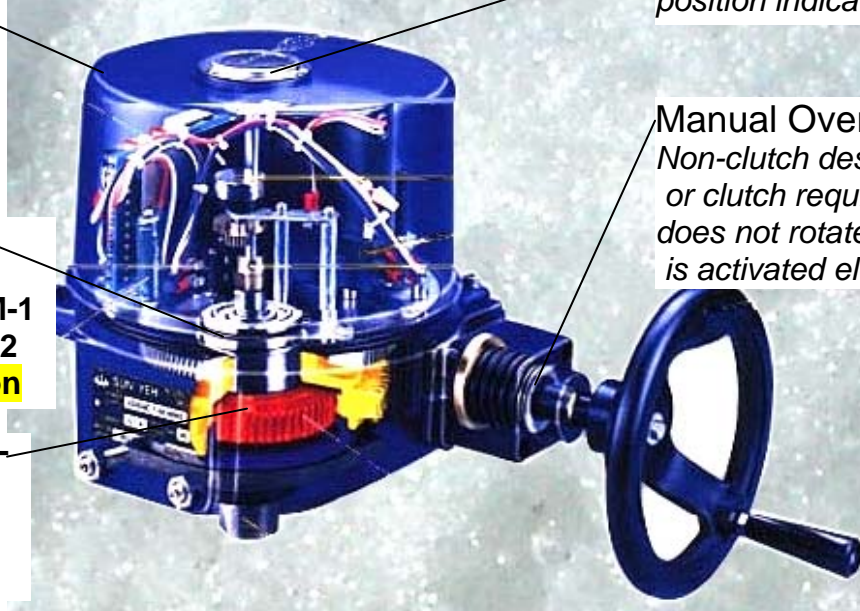
IP 67 (Nema 4, 4X)

waterproof and dust-proof
Dry powder coated
aluminum alloy

Standard extended duty
cycle induction motor.
H insulation class for OM-1
F class for OM-2 to OM-12
Built in thermal protection

Alloy steel gears are self-
locking preventing
backlash

Pre lubricated



Position Indicator

Continuous mechanical
position indicator in cover.

Manual Override

Non-clutch design. No levers
or clutch required. Hand wheel
does not rotate when actuator
is activated electrically.

• Working Conditions

Temperature -5°C – 60°C (-40°C with optional heater)
Humidity 30%RH – 95%RH

• Certificates

ISO 9001
CE
CSA

Options:

Heater
Additional Limit Switches
Potentiometer
Local control unit (local/remote, on-off)
Adjustable torque switches
Position Transmitter (4-20ma)
Modulating Controller
Various power supplies

- **DUTY CYCLE – STANDARD 25%, EXTENDED 75%**
- **CSA CERTIFICATE OF COMPLIANCE – CLASS 322102
CLASS 322182 U.S. STANDARDS**
- **MOTOR CONTROL UNITS FOR ELECTRICALLY OPERATED VALVES
OUTDOOR INTERMITTENT DUTY. CLASS A INSULATION, THERMALLY PROTECTED**



Electric Rotary Actuator Nema 4, 4x –CSA, CE,

OM
300-30000
LBS-IN

SPECIFICATIONS

12V / 24V											
Model No.	Torque in/lbs	Speed 90°	Motor Power	Motor Speed		12V DC / AC			24V DC / AC		
				12 V	24 V	Run	Start	Lock	Run	Start	Lock
OM-1	310	15 s	10 W	3600/min	3600/min	1.9A	2.0A	2.8A	1.1A	1.1A	1.6A
OM-2	797	15 s	40 W	1800/min	1800/min	3.4A	5.2A	16.5A	2.2A	4.5A	14.5A
OM-3	1328	22 s	40 W	1800/min	1800/min	4.4A	4.9A	16.5A	2.4A	5.0A	14.5A
OM-4	3542	16 s	80 W	1800/min	1800/min	16.1A	16.1A	33.0A	8.5A	9.2A	30.0A
OM-5	4427	22 s	80 W	1800/min	1800/min	14.1A	13.5A	33.0A	7.5A	9.0A	30.0A
OM-6	5756	28 s	80 W	1800/min	1800/min	12.3A	12.5A	33.0A	7.0A	8.5A	30.0A
OM-7	8855	46 s	80 W		1800/min				6.8A	7.8A	30.0A
OM-8	13282	46 s	80 W		1800/min				8.1A	8.0A	30.0A
OM-9	17709	58 s	80 W		1800/min				8.8A	11.0A	26.0A
OM-10	22137	58 s	80 W		1800/min				11.8A	11.0A	26.0A
OM-11	26564	58 s	220 W		1800/min				15.1A	11.0A	33.0A
OM-12	30991	58 s	220 W		1800/min				17.8A	12.0A	33.0A

120V / 240V												
Model No.	Torque in/lbs	Speed 90°		Motor Power	Motor Speed		120VAC			240VAC		
		60HZ	50HZ		60HZ	50HZ	Run	Start	Lock	Run	Start	Lock
OM-1	310	12s	13s	10W	3600/min	3000/min	0.6A	0.6A	0.7A	0.3A	0.4A	0.4A
OM-2	797	15s	17s	40W	1720/min	1450/min	1.0A	1.8A	1.6A	0.5A	0.8A	0.9A
OM-3	1328	22s	26s	40W	1720/min	1450/min	1.2A	1.8A	1.6A	1.0A	1.2A	0.9A
OM-4	3542	16s	18s	80W	1720/min	1420/min	1.9A	3.8A	3.6A	1.1A	2.0A	2.2A
OM-5	4427	22s	25s	80W	1720/min	1450/min	2.0A	3.8A	3.6A	1.1A	2.0A	2.2A
OM-6	5756	28s	31s	80W	1720/min	1450/min	2.1A	3.8A	3.6A	1.1A	2.0A	2.2A
OM-7	8855	46s	55s	120W	1720/min	1450/min	3.1A	8.5A	9.0A	1.4A	4.1A	5.0A
OM-8	13282	46s	55s	120W	1720/min	1450/min	3.3A	9.0A	9.0A	1.6A	4.4A	5.0A
OM-9	17709	58s	70s	180W	1720/min	1450/min	3.3A	5.8A	5.9A	2.1A	3.8A	3.6A
OM-10	22137	58s	70s	180W	1720/min	1450/min	4.0A	6.5A	5.9A	2.3A	4.0A	3.6A
OM-11	26564	58s	70s	180W	1720/min	1450/min	4.5A	3.5A	5.9A	2.5A	4.2A	3.6A
OM-12	30991	58s	70s	220W	1720/min	1420/min	4.0A	8.0A	7.5A	2.4A	4.4A	4.8A
OM-13	39846	80s	95s	220W	1720/min	1420/min	4.2A	8.0A	7.5A	2.4A	4.8A	4.8A

THREE PHASE															
Model No.	Torque in/lbs	Speed 90°		Motor Power	Motor Speed		220V			380V			440V		
		60HZ	50HZ		60HZ	50HZ	Run	Start	Lock	Run	Start	Lock	Run	Start	Lock
OM-2	797	15 s	17 s	40W	1720/min	1450/min	0.8A	1.4A	1.5A	0.4A	0.7A	0.7A	0.4A	0.9A	0.6A
OM-3	1328	22 s	26 s	40W	1720/min	1450/min	0.8A	1.4A	1.5A	0.4A	0.7A	0.7A	0.4A	0.9A	0.6A
OM-4	3542	16 s	18 s	80W	1720/min	1450/min	1.0A	1.8A	2.3A	0.7A	1.3A	1.5A	0.6A	1.4A	1.4A
OM-5	4427	22 s	25 s	80W	1720/min	1450/min	1.0A	1.8A	2.3A	0.7A	1.3A	1.5A	0.6A	1.4A	1.4A
OM-6	5756	28 s	31 s	80W	1720/min	1450/min	1.0A	1.8A	2.3A	0.7A	1.3A	1.5A	0.6A	1.4A	1.4A
OM-7	8855	46 s	55 s	120W	1720/min	1450/min	0.9A	2.0A	2.2A	0.7A	1.2A	1.4A	0.5A	1.3A	1.3A
OM-8	13282	46 s	55 s	120W	1720/min	1450/min	1.0A	2.4A	2.6A	0.7A	1.5A	1.5A	0.6A	1.2A	1.2A
OM-9	17709	58 s	70 s	180W	1720/min	1450/min	1.3A	3.7A	3.9A	0.7A	2.0A	2.3A	0.7A	2.0A	2.2A
OM-10	22137	58 s	70 s	180W	1720/min	1450/min	1.3A	3.4A	3.9A	0.7A	2.0A	2.4A	0.7A	2.0A	2.2A
OM-11	26564	58 s	70 s	180W	1720/min	1450/min	1.3A	3.5A	3.9A	0.7A	2.0A	2.4A	0.7A	2.0A	2.2A
OM-12	30991	58 s	70 s	220W	1720/min	1450/min	1.5A	4.8A	5.4A	0.9A	2.5A	2.5A	0.8A	2.6A	2.4A
OM-13	39846	80 s	95 s	220W	1720/min	1450/min	1.5A	4.9A	5.4A	1.0A	2.5A	2.5A	0.8A	2.6A	2.4A

PMP Precision Valve Company Ltd. Is a progressive supplier of current products. The features, materials of construction and dimensional data as detailed in this bulletin are intended for your reference only, and should not be relied upon unless confirmed in writing by PMP Precision Valve Co. Ltd.. Certified dimensional drawings are available upon order receipt.

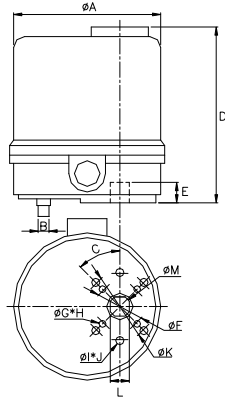


Electric Rotary Actuator Nema 4, 4x –CSA, CE,

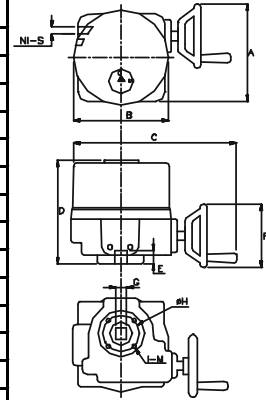
OM
300-30000
LBS-IN

DIMENSIONS

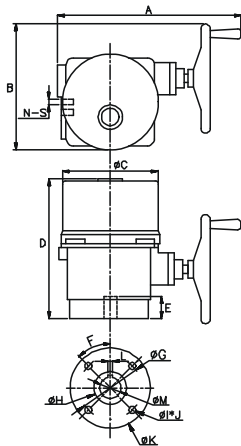
Model OM-1		
A	in	4.25
	mm	108
B	in	0.31
	mm	8
C	mm	45°
D	in	7.28
	mm	185
E	in	0.59
	mm	15
F	in	1.42
	mm	36
G	mm	M5
H	in	0.16
	mm	4
I	in	M6
	mm	
J	in	0.24
	mm	6
K	in	1.97
	mm	50
L	in	0.55
	mm	14
M	in	0.75
	mm	19
N		1
S		1/2 NPT
ISO 5211		F03/F07



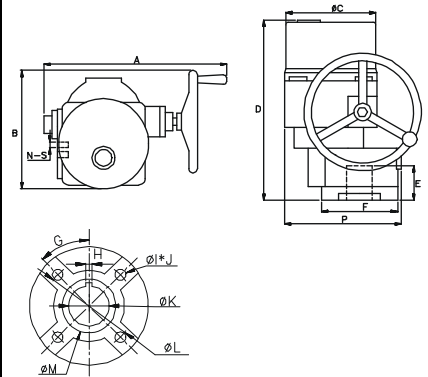
MODEL	OM-2-3	OM-4-5-6
A	in	7.87
	mm	200
B	in	7.87
	mm	200
C	in	12.99
	mm	330
D	in	8.11
	mm	206
E	in	1.18
	mm	30
F	in	4.92
	mm	125
G	in	0.87
	mm	22
MAX	mm	38
H	in	2.76
	mm	70
I	in	0.16
	mm	4
M		M8
N	in	0.08
	mm	2
S	mm	1/2 NPT
ISO 5211		F07



MODEL	OM-7-8	
A	in	20.5
	mm	520
B	in	13.4
	mm	340
C	in	8.7
	mm	220
D	in	15.0
	mm	382
E	in	2.4
	mm	60
F	mm	45°
	in	5.5
G	mm	140
	in	2.6
H	mm	65
		M16
J	in	0.2
	mm	4
K	in	7.1
	mm	180
L	in	0.4
	mm	10
M	in	1.4
	mm	35
N	in	0.1
	mm	2
S	mm	1/2 NPT
ISO 5211		F14



MODEL	OM-9-10-11-12	
A	in	21.3
	mm	540
B	in	13.8
	mm	350
C	in	10.2
	mm	260
D	in	22.1
	mm	561
E	in	3.9
	mm	100
F	in	8.7
	mm	221
G	mm	45°
	in	0.5
H	mm	12
	in	M20
J	in	0.2
	mm	4
K	in	3.0
	mm	75
L	in	6.5
	mm	165
M	in	3.9
	mm	100
P	in	14.2
	mm	360
N	in	0.1
	mm	2
S	mm	1/2 NPT
ISO 5211		F14/F16



PMP Precision Valve Company Ltd. Is a progressive supplier of current products. The features, materials of construction and dimensional data as detailed in this bulletin are intended for your reference only, and should not be relied upon unless confirmed in writing by PMP Precision Valve Co. Ltd.. Certified dimensional drawings are available upon order receipt.



Electric Rotary Actuator Nema 4, 4x –CSA, CE,

OM
300-30000
LBS-IN

ACCESSORIES



HEATER



MODULATING
CONTROLLER
OM-1 ONLY



POSITION FEEDBACK
INDICATOR



LOCAL CONTROL
UNIT



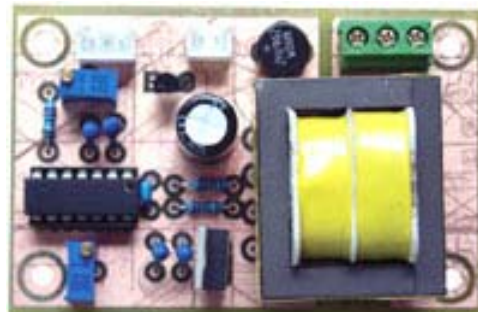
POTENTIOMETER



MODULATING
CONTROLLER



TORQUE SWITCHES



POSITION
TRANSMITTER