



# 2 Piece Fire Tested Flanged Ball Valve – Full Bore

# M215

ANSI 150  
1/2" – 16"

## Locking Tab Washer

Keeps Lock nut from loosening in High Cycle Automated Applications

## ISO 5211 Mounting Pad

Allows direct mounting of actuation to valve, reducing hysteresis.

## Secondary Viton Stem Seal

## Full Bore

for maximum flow



## Live Loaded Stem Packing

Keeps packing tight avoiding leaking valves and costly shutdowns or repairs.

## MG1241 Packing

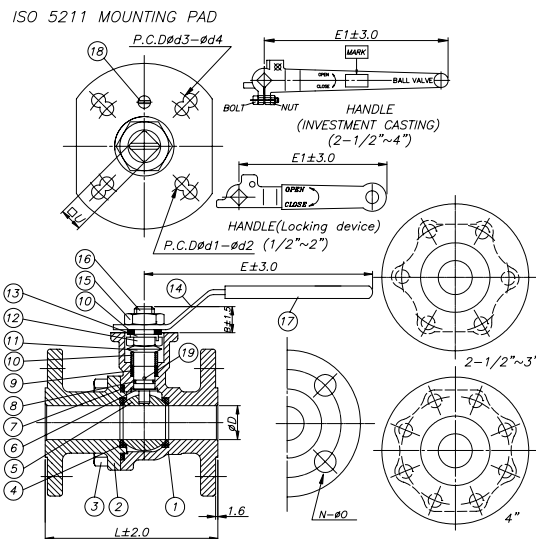
## Investment Cast CF8M Body 1/2" - 4"

## Blow-out Proof Anti Static Stem

## Polished Solid Stainless Steel Ball

- Fire Tested Design to API 607
- Designed to: ANSI B 16.34
- Flanged ends to ANSI B16.5
- Face to Face: ANSI B 16.10
- Various Seat options

## SIZES 1/2" – 4"



NO.	PART NAME	Q'TY	MATERIAL	
1	BODY	1	ASTM A351 GR. CF8M	ASTM A216 GR. WCB
2	END CAP	1	ASTM A351 GR. CF8M	ASTM A216 GR. WCB
3	HEX BOLT	4 - 8	A4-70	S45C
4	SEAT	2	TFM 1600	TFM 1600
5	BALL	1	SS316	SS304
6	THRUST WASHER	1	MG 1241	MG 1241
7	BODY GASKET	1	SS304 + GRAPHITE	SS304 + GRAPHITE
8	O-RING	1	VITON	VITON
9	GLAND PACKING	1 SET	GRAPHITE	GRAPHITE
10	GLAND	2	SS304	SS304
11	DISC SPRING	2	SS301	SS301
12	GLAND NUT	1	A4-70	S45C
13	TAB WASHER	1	SS304	SS304
14	HANDLE	1	SS304	CARBON STEEL
15	HANDLE NUT 1/2" - 2"	1	A4-70	S45C
16	STEM	1	SS316	SS304
17	COVER	1	PLASTIC	PLASTIC
18	STOPPER	1	SS304	SS304
19	ANTI STATIC optional	1	SS316	SS304

SIZE	1/2"	3/4"	1"	1-1/4"	1-1/2"	2"	2-1/2"	3"	4"
L	in	4.25	4.60	5.00	5.50	6.50	7.00	7.50	8.00
	mm	108	117	127	140	165	178	191	203
D	in	0.50	0.75	1.00	1.25	1.50	2.00	2.50	3.00
	mm	13	20	25	32	40	50	65	76
U		9	9	11	11	14	14	17	17
d1	in	1.42	1.42	1.66	1.66	1.97	1.97	2.76	2.76
	mm	36	36	42	42	50	50	70	70
d2	in	0.22	0.22	0.22	0.22	0.26	0.26	0.34	0.34
	mm	5.5	5.5	5.5	5.5	6.5	6.5	8.5	8.5
E	in	4.49	4.49	5.24	7.37	7.37	7.37		
	mm	114	114	133	187	187	187		
E1	in	4.49	4.49	5.24	7.37	8.75	8.75	12.41	12.41
	mm	114	114	133	187	222	222	315	315
N		4	4	4	4	4	4	4	8
O	in	0.63	0.63	0.63	0.63	0.63	0.75	0.75	0.75
	mm	16	16	16	16	16	19	19	19
ISO 5211	F03,F04	F03,F04	F04,F05	F04,F05	F05,F07	F05,F07	F07	F07	F07,F10
Cv		25	50	80	150	240	460	820	1250

PMP Precision Valve Company Ltd. Is a progressive supplier of current products. The features, materials of construction and dimensional data as detailed in this bulletin are intended for your reference only, and should not be relied upon unless confirmed in writing by PMP Precision Valve Co. Ltd.. Certified dimensional drawings are available upon order receipt.

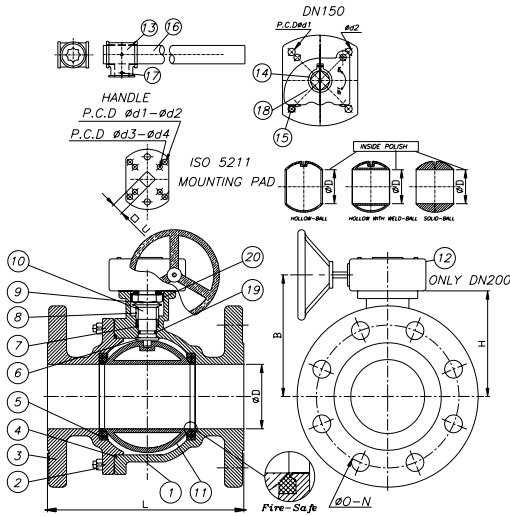


# 2 Piece Fire Tested Flanged Ball Valve – Full Bore

# M215

ANSI 150  
1/2" – 16"

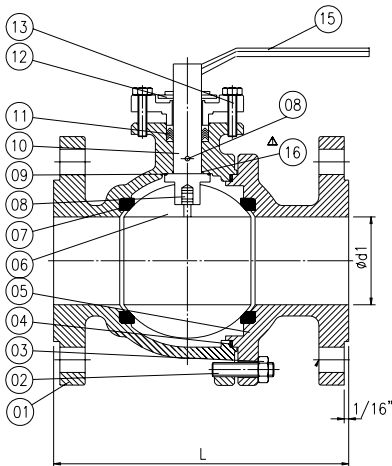
## SIZES 6" – 8"



NO.	PART NAME	QTY	MATERIAL	
1	BODY	1	ASTM A351 GR. CF8M	ASTM A216 GR. WCB
2	BOLT	8 - 12	A4-70	S45C
3	END CAP	1	ASTM A351 GR. CF8M	ASTM A216 GR. WCB
4	BODY GASKET	1	SS304 + GRAPHITE	SS304 + GRAPHITE
5	SEAT	2	TFM 1600	TFM 1600
6	THRUST WASHER	1	MG 1241	MG 1241
7	STEM PACKING	1 SET	GRAPHITE	GRAPHITE
8	GLAND	1	SS304	SS304
9	DISC SPRING	2	SS301	SS301
10	STEM	1	SS316	SS304
11	BALL	1	SS316	SS304
12	GEAR OPERATOR	1	ASTM A536	ASTM A536
13	HANDLE	1	CF8	WCB
14	RETAINER	1	SS304	SS304
15	PACKING ADJUSTING BOLT	1	A4-70	S45C
16	STAINLESS TUBE	1	SS304	SS304
17	BOLT	2	A4-70	S45C
18	STOP PLATES (5" - 6")	1	SS304	SS304
19	O - RINGS (5" - 6")	1	VITON	VITON
20	TAB WASHER	1	SS304	SS304

SIZE	6"	8"	
L	in	15.50	18.00
	mm	394	457
D	in	6.00	8.00
	mm	150	200
U	in	1.07	1.07
	mm	27	27
d1	in	4.93	
	mm	125	
d2	in	0.50	
	mm	12.5	
d3	in	4.02	4.93
	mm	102	125
d4	in	0.42	0.52
	mm	10.5	13
E	in	8.50	10.63
	mm	215.9	269.75
N		8	8
O	in	0.89	0.89
	mm	22.36	22.36
ISO 5211		F10, F12	F12
Cv		5500	9800

## SIZES 10" – 16"



NO.	PART NAME	MATERIAL	
1	BODY	ASTM A351 GR. CF8M	ASTM A216 GR. WCB
2	CAP BOLT	B8	B7
3	CAP NUT	GR. 8	2H
4	GASKET	SS304 + GRAPHITE	SS304 + GRAPHITE
5	CAP	CF8M	WCB
6	BALL	CF8M	CF8
7	SEAT	TFM 1600	TFM 1600
8	ANTI STATIC DEVICE	SS304	SS304
9	THRUST WASHER	PTFE + MG 1241	PTFE + MG 1241
10	STEM	SS316	SS316
11	PACKING	GRAPHITE	GRAPHITE
12	GLAND	CF8M	WCB
13	GLAND BOLT	SS304	S45C
14	GEAR	CAST IRON	CAST IRON
15	HANDLE	CAST IRON	CAST IRON
16	STEM BEARING	VITON	VITON

SIZE	10"	12"	14"	16"	
L	in	21.00	24.00	27.00	30.00
	mm	533	610	686	762
d1	in	10.00	12.00	14.00	16.00
	mm	250	300	350	400