



2 Piece Fire Tested Flanged Ball Valve – Full Bore

M216
PN 10 / 16
½" – 4"

Locking Tab Washer
Keeps Lock nut from loosening in High Cycle Automated Applications

ISO 5211 Mounting Pad
Allows direct mounting of actuation to valve, reducing hysteresis.

Secondary Viton Stem Seal

Full Bore
for maximum flow



Live Loaded Stem Packing Keeps packing tight avoiding leaking valves and costly shutdowns or repairs.

PTFE / Graphite Packing

Investment Cast CF8M Body ½" - 4"

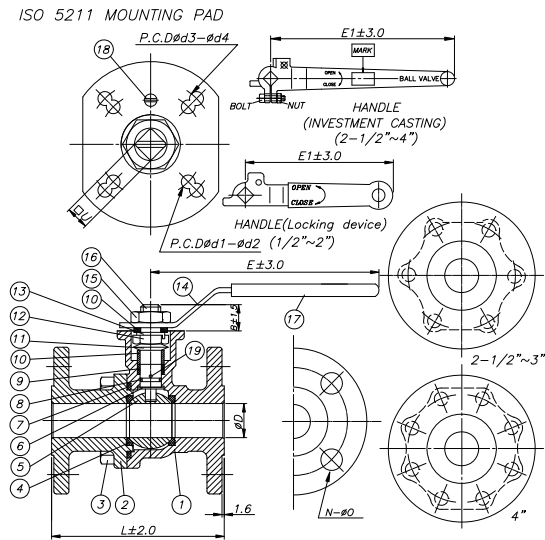
Blow-out Proof Anti Static Stem

Polished Solid Stainless Steel Ball

- Designed to: EN 12266.1
- Flanged ends to PN 10 / 16
- Face to Face: F1 / F4
- Various Seat options

SIZES ½" – 4"

NO.	PART NAME	QTY	MATERIAL
1	BODY	1	Carbon Steel
2	END CAP	1	Carbon Steel
3	HEX BOLT	4 - 8	SS304
4	SEAT	2	TFM 1600
5	BALL	1	SS316
6	THRUST WASHER	1	PTFE
7	BODY GASKET	1	PTFE
8	O-RING	1	VITON
9	GLAND PACKING	1 SET	PTFE
10	GLAND	2	SS304
11	DISC SPRING	2	SS301
12	GLAND NUT	1	SS304
13	TAB WASHER	1	SS304
14	HANDLE	1	SS304
15	HANDLE NUT ½" - 2"	1	SS304
16	STEM	1	SS316
17	COVER	1	PLASTIC
18	STOPPER	1	SS304
19	ANTI STATIC optional	1	SS304



SIZE		1/2"	3/4"	1"	1-1/4"	1-1/2"	2"	2-1/2"	3"	4"
L	F1	in 5.12	5.91	6.30	7.09	7.87	9.06	11.42	12.20	13.78
		mm 130	150	160	180	200	230	290	310	350
L	F4	in 4.53	4.72	4.92	5.12	5.51	5.91	6.69	7.09	7.48
		mm 115	120	125	130	140	150	170	180	190
D		in 0.59	0.79	0.98	1.26	1.57	1.97	2.56	3.15	3.94
		mm 15	20	25	32	40	50	65	80	100
U		in 9	9	11	11	14	14	17	17	17
		mm 229	229	279	279	354	354	429	429	429
d1		in 1.42	1.42	1.66	1.66	1.97	1.97	2.76	2.76	2.76
		mm 36	36	42	42	50	50	70	70	70
d2		in 0.22	0.22	0.22	0.22	0.26	0.26	0.34	0.34	0.34
		mm 5.5	5.5	5.5	5.5	6.5	6.5	8.5	8.5	8.5
E		in 4.49	4.49	5.24	7.37	7.37	7.37			
		mm 114	114	133	187	187	187			
E1		in 4.49	4.49	5.24	7.37	8.75	8.75	12.41	12.41	12.41
		mm 114	114	133	187	222	222	315	315	315
N		in 4	4	4	4	4	4	4	4	8
		mm 102	102	102	102	102	102	102	102	203
O		in 0.56	0.56	0.56	0.71	0.71	0.71	0.71	0.71	0.71
		mm 14	14	14	18	18	18	18	18	18
Cv		in 25	50	80	150	240	460	820	1250	2300
		mm 635	1270	2032	3810	6096	11684	20828	31765	58420
Kv		in 30	59	80	137	246	386	497	821	1404
		mm 762	1494	2032	3480	6216	9842	12680	20828	35424

PMP Precision Valve Company Ltd. Is a progressive supplier of current products. The features, materials of construction and dimensional data as detailed in this bulletin are intended for your reference only, and should not be relied upon unless confirmed in writing by PMP Precision Valve Co. Ltd.. Certified dimensional drawings are available upon order receipt.