



2 Piece Fire Tested Flanged Ball Valve – Full Bore

M230
ANSI 300
1/2" – 8"

Locking Tab Washer
Keeps Lock nut from loosening in High Cycle Automated Applications

ISO 5211 Mounting Pad
Allows direct mounting of actuation to valve, reducing hysteresis.

Secondary Viton Stem Seal

Full Bore
for maximum flow



Live Loaded Stem Packing Keeps packing tight avoiding leaking valves and costly shutdowns or repairs.

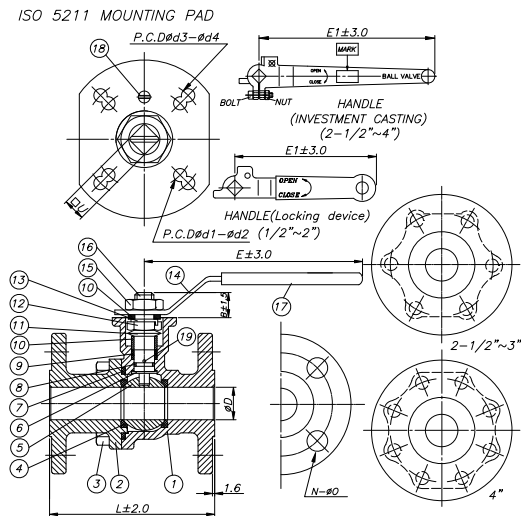
MG1241 Packing

Investment Cast CF8M Body to 4"

Polished Solid Stainless Steel Ball

- Fire Safe, Anti- Static Design
- Designed to: ANSI B 16.34
- Flanged ends to ANSI B16.5 (Class 300)
- Anti Static Blow-Out Proof Stem
- Face to Face: ANSI B 16.10
- Various Seat options

SIZES 1/2" – 4"



NO.	PART NAME	Q'TY	MATERIAL	
1	BODY	1	ASTM A351 GR. CF8M	ASTM A216 GR. WCB
2	END CAP	1	ASTM A351 GR. CF8M	ASTM A216 GR. WCB
3	HEX BOLT	4 - 8	A4-70	S45C
4	SEAT	2	TFM 1600	TFM 1600
5	BALL	1	SS316	SS304
6	THRUST WASHER	1	MG 1241	MG 1241
7	BODY GASKET	1	SS304 + GRAPHITE	SS304 + GRAPHITE
8	O-RING	1	VITON	VITON
9	GLAND PACKING	1 SET	GRAPHITE	GRAPHITE
10	GLAND	2	SS304	SS304
11	DISC SPRING	2	SS301	SS301
12	GLAND NUT	1	A4-70	S45C
13	TAB WASHER	1	SS304	SS304
14	HANDLE	1	SS304	CARBON STEEL
15	HANDLE NUT	1	A4-70	S45C
16	STEM	1	SS316	SS304
17	COVER	1	PLASTIC	PLASTIC
18	STOPPER	1	SS304	SS304
19	ANTI STATIC optional	1	SS316	SS304

SIZE	1/2"	3/4"	1"	1-1/4"	1-1/2"	2"	2-1/2"	3"	4"	
L	in	5.50	6.00	6.50	7.00	7.50	8.50	9.50	11.13	12.00
	mm	140	152	165	178	191	216	241	283	305
D	in	0.50	0.75	1.00	1.25	1.50	2.00	2.50	3.00	4.00
	mm	13	20	25	32	40	50	65	76	100
U	in	0.22	0.22	0.22	0.22	0.26	0.26	0.34	0.34	0.34
	mm	5.5	5.5	5.5	5.5	6.5	6.5	8.5	8.5	8.5
d1	in	1.42	1.42	1.66	1.66	1.97	1.97	2.76	2.76	2.76
	mm	36	36	42	42	50	50	70	70	70
d2	in	0.22	0.22	0.22	0.22	0.26	0.26	0.34	0.34	0.34
	mm	5.5	5.5	5.5	5.5	6.5	6.5	8.5	8.5	8.5
E	in	4.49	4.49	5.24	7.37	7.37	7.37			
	mm	114	114	133	187	187	187			
E1	in	4.49	4.49	5.24	7.37	8.75	8.75	12.41	12.41	12.41
	mm	114	114	133	187	222	222	315	315	315
N	in	4	4	4	4	8	8	8	8	8
	mm	101.6	101.6	101.6	101.6	203.2	203.2	203.2	203.2	203.2
O	in	0.63	0.76	0.76	0.76	0.89	0.89	0.89	0.89	0.89
	mm	15.8	19.1	19.1	19.1	22.4	22.4	22.4	22.4	22.4
ISO 5211	F03,F04	F03,F04	F04,F05	F04,F05	F05,F07	F05,F07	F07	F07	F07,F10	
Cv		25	50	80	150	240	460	820	1250	2300

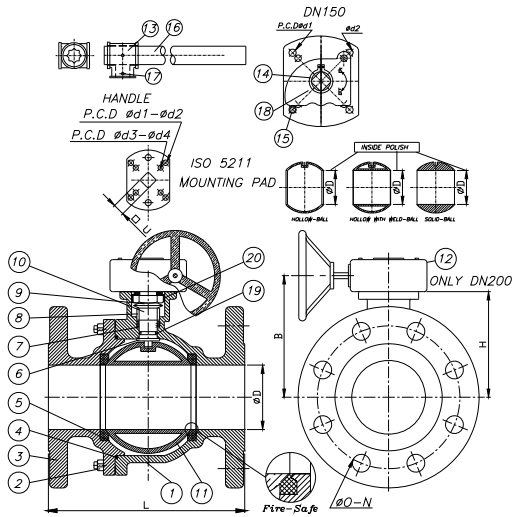
PMP Precision Valve Company Ltd. Is a progressive supplier of current products. The features, materials of construction and dimensional data as detailed in this bulletin are intended for your reference only, and should not be relied upon unless confirmed in writing by PMP Precision Valve Co. Ltd.. Certified dimensional drawings are available upon order receipt.



2 Piece Fire Tested Flanged Ball Valve – Full Bore

M230
ANSI 300
½" – 8"

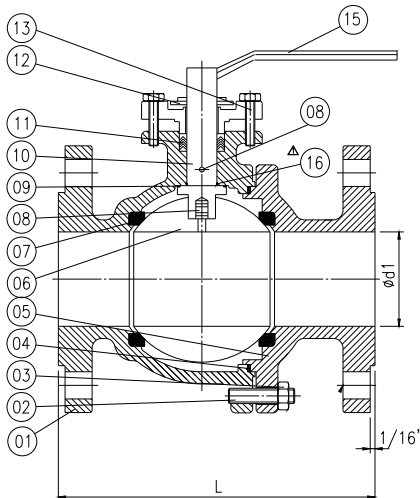
SIZES 6" – 8"



NO.	PART NAME	QTY	
1	BODY	1	ASTM A351 GR
2	BOLT	8 - 12	A4-70
3	END CAP	1	ASTM A351 GR
4	BODY GASKET	1	SS304 + GRAI
5	SEAT	2	TFM 1600
6	THRUST WASHER	1	MG 1241
7	STEM PACKING	1 SET	GRAPHIT
8	GLAND	1	SS304
9	DISC SPRING	2	SS301
10	STEM	1	SS316
11	BALL	1	SS316
12	GEAR OPERATOR	1	ASTM A53
13	HANDLE	1	CF8
14	RETAINER	1	SS304
15	PACKING ADJUSTING BOLT	1	A4-70
16	STAINLESS TUBE	1	SS304
17	BOLT	2	A4-70
18	STOP PLATES (5" - 6")	1	SS304
19	O - RINGS (5" - 6")	1	VITON
20	TAB WASHER	1	SS304

SIZE		6"	8"
L	in	15.90	19.80
	mm	403	502
D	in	6.00	8.00
	mm	150	200
U	in	1.07	1.07
	mm	27	27
d1	in	4.93	
	mm	125	
d2	in	0.50	
	mm	12.5	
d3	in	4.02	4.93
	mm	102	125
d4	in	0.42	0.52
	mm	10.5	13
E	in	8.50	10.63
	mm	215.9	269.8
N	in	12	12
	mm		
O	in	0.89	0.89
	mm	22.4	22.4
ISO 5211		F10, F12	F12
Cv		5500	9800

SIZES 10" – 16"



NO.	PART NAME	MATERIAL	
		ASTM A351 GR. CF8M	ASTM A216 GR. WCB
1	BODY	ASTM A351 GR. CF8M	ASTM A216 GR. WCB
2	CAP BOLT	B8	B7
3	CAP NUT	GR. 8	2H
4	GASKET	GRAFOIL	GRAFOIL
5	CAP	CF8M	WCB
6	BALL	CF8M	CF8M
7	SEAT	TFM 1600	TFM 1600
8	ANTI STATIC DEVICE	SS304	SS304
9	THRUST WASHER	PTFE + MG 1241	PTFE + MG 1241
10	STEM	SS316	SS316
11	PACKING	GRAFOIL	GRAFOIL
12	GLAND	CF8M	WCB
13	GLAND BOLT	SS304	S45C
14	GEAR	CAST IRON	CAST IRON
15	HANDLE	CAST IRON	CAST IRON
16	STEM BEARING	VITON	VITON

SIZE		10"	12"
L	in	22.40	25.50
	mm	568	648
d1	in	10.00	12.00
	mm	252	302

PMP Precision Valve Company Ltd. Is a progressive supplier of current products. The features, materials of construction and dimensional data as detailed in this bulletin are intended for your reference only, and should not be relied upon unless confirmed in writing by PMP Precision Valve Co. Ltd.. Certified dimensional drawings are available upon order receipt.