

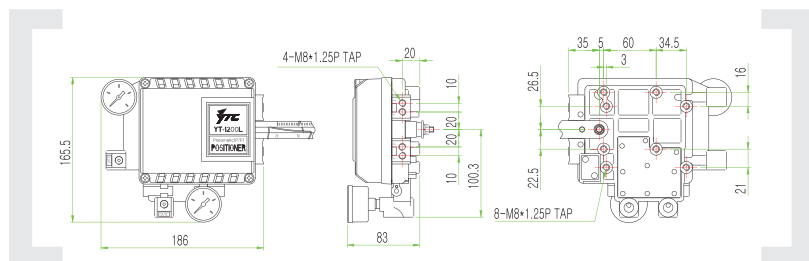
Pneumatic-Pneumatic Positioner YT-1200L

Model	Acting Type	Lever Type	Orifice Type	Connection Type	Operating Temp
YT-1200L	S Single	1 10 ~ 40mm	1 ϕ 1	1 PT	S -20°C ~ 70°C
	D Double	2 30 ~ 70mm	2 ϕ 2	2 NPT	H -20°C ~ 120°C
		3 60 ~ 100mm	3 None		L -40°C ~ 70°C
		4 100 ~ 150mm			



YT-1200L

Item · Type	Single	Double
Input Signal	0.02~0.1MPa(0.2~1 bar)	
Supply Pressure	0.14~0.7MPa(1.4~7 bar)	
Stroke	10 ~150mm	
Air Connection	PT(NPT) 1/4	
Gauge Connection	PT(NPT) 1/8	
Ingress Protection	IP66	
Operating Temp (Standard Type)	-20°C~70°C(-4~158°F)	
Linearity	±1% F.S.	±2% F.S.
Hysteresis	±1% F.S.	
Sensitivity	±0.2% F.S.	±0.5% F.S.
Repeatability	±0.5% F.S.	
Air Consumption	2.5LPM (sup=0.14MPa)	
Flow Capacity	80LPM (sup=0.14MPa)	
Material	Aluminum Diecasting	
Weight	1.7kg (3.1 lb)	



The Pneumatic positioner YT-1200L is used for pneumatic linear valve actuators by means of pneumatic controller or control systems with an output signal of 3 to 5 psi or split ranges.

- Simple zero and span adjustment
- No resonance between 5-200Hz
- Auto/Manual switch
- RA v.s. DA action and 1/2 split range setting by simple adjustment