



Automatic Damper Valve

ST

2" - 60"

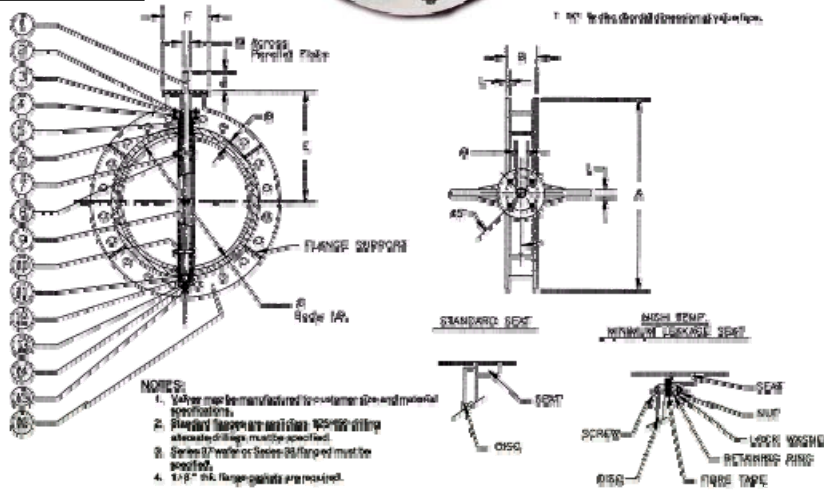
Actuators direct mount

Replaceable Adjustable Packing

Upper and Lower Roller Bearings for -40F - 1200F

Discs are thru-shaft removable

- Designed to ANSI B 16.5
- Faced to 125 RMS
- Class IV Leakage
- Shafts are 316 SS
- Options:**
- High Cycle
- Resilient Seated



Size	Stem Dia.		A	B	C	D	E	F	G	H	J	K*	L	Plate Drilling		
	Inches	mm												No. Holes	Hole Dia.	
2	in	0.56	6	1.62	2	0.16	5.5	4	0.56	0.38	1.37	1.31	0.25	2.76	4	0.38
	mm	0.02	0.24	0.06	0.08	0.01	0.22	0.16	0.02	0.01	0.05	0.05	0.01	0.11	4	0.01
2.5	in	0.56	7	1.75	2.5	0.2	6	4	0.56	0.38	1.37	1.88	0.25	2.76	4	0.38
	mm	0.02	0.28	0.07	0.10	0.01	0.24	0.16	0.02	0.01	0.05	0.07	0.01	0.11	4	0.01
3	in	0.56	7.5	1.75	3	0.22	6.25	4	0.56	0.38	1.37	2.5	0.25	2.76	4	0.38
	mm	0.02	0.30	0.07	0.12	0.01	0.25	0.16	0.02	0.01	0.05	0.10	0.01	0.11	4	0.01
4	in	0.62	9	2	4	0.23	7	4	0.62	0.44	1.37	3.56	0.25	2.76	4	0.38
	mm	0.02	0.35	0.08	0.16	0.01	0.28	0.16	0.02	0.02	0.05	0.14	0.01	0.11	4	0.01
5	in	0.62	10	2.12	5	0.25	7.5	4	0.62	0.44	1.37	4.62	0.25	2.76	4	0.38
	mm	0.02	0.39	0.08	0.20	0.01	0.30	0.16	0.02	0.02	0.05	0.18	0.01	0.11	4	0.01
6	in	0.62	11	2.12	6	0.25	8	4	0.62	0.44	1.37	5.44	0.25	2.76	4	0.38
	mm	0.02	0.43	0.08	0.24	0.01	0.31	0.16	0.02	0.02	0.05	0.21	0.01	0.11	4	0.01
8	in	0.75	13.5	2.5	8	0.25	9.5	4	0.75	0.4	1.4	7.44	0.25	2.76	4	0.38
	mm	0.03	0.53	0.10	0.31	0.01	0.37	0.16	0.03	0.02	0.06	0.29	0.01	0.11	4	0.01
10	in	0.87	16	2.5	10	0.25	10.75	6	0.87	0.63	1.4	9.5	0.25	2.76	4	0.38
	mm	0.03	0.63	0.10	0.39	0.01	0.42	0.24	0.03	0.02	0.06	0.37	0.01	0.11	4	0.01
12	in	1.18	19	3	12	0.25	12.25	6	1.12	xx	2.15	11.44	0.25	2.76	4	0.38
	mm	0.05	0.75	0.12	0.47	0.01	0.48	0.24	0.04	xx	0.08	0.45	0.01	0.11	4	0.01
14	in	1.18	21	3	14	0.25	13.38	6	1.12	xx	2.15	13	0.25	2.76	4	0.38
	mm	0.05	0.83	0.12	0.55	0.01	0.53	0.24	0.04	xx	0.08	0.51	0.01	0.11	4	0.01
16	in	1.18	23.5	4	16	0.25	14.25	6	0.75	0.51	1.25	15.5	0.38	2.76	4	0.38
	mm	0.05	0.93	0.16	0.63	0.01	0.56	0.24	0.03	0.02	0.05	0.61	0.01	0.11	4	0.01
18	in	1.18	25	4.25	18	0.25	15	6	0.75	0.51	1.25	17.5	0.38	2.76	4	0.38
	mm	0.05	0.98	0.17	0.71	0.01	0.59	0.24	0.03	0.02	0.05	0.69	0.01	0.11	4	0.01
20	in	1.38	27.5	4.88	20	0.25	16.25	6	0.75	0.51	1.25	19.44	0.38	2.76	4	0.38
	mm	0.05	1.08	0.19	0.79	0.01	0.64	0.24	0.03	0.02	0.05	0.77	0.01	0.11	4	0.01
24	in	1.38	32	5.94	24	0.38	20.12	6	0.75	0.51	1.25	23.38	0.5	2.76	4	0.38
	mm	0.05	1.26	0.23	0.94	0.01	0.79	0.24	0.03	0.02	0.05	0.92	0.02	0.11	4	0.01
30	in	1.38	38.75	6.56	30	0.38	22.88	6.56	1.18	0.87	2	29.25	0.5	4.92	4	0.56
	mm	0.05	1.53	0.26	1.18	0.01	0.90	0.26	0.05	0.03	0.08	1.15	0.02	0.19	4	0.02
36	in	1.97	46	7.88	36	0.5	26.5	7.88	1.18	0.87	2	35.06	0.62	4.92	4	0.56
	mm	0.08	1.81	0.31	1.42	0.02	1.04	0.31	0.05	0.03	0.08	1.38	0.02	0.19	4	0.02
42	in	1.97	53	9.88	42	0.5	30.25	9.88	1.18	0.87	2	40.75	0.62	4.92	4	0.56
	mm	0.08	2.09	0.39	1.65	0.02	1.19	0.39	0.05	0.03	0.08	1.60	0.02	0.19	4	0.02
48	in	3	59.5	10.88	48	0.62	35.75	10.88	1.18	0.87	2	46.75	0.75	4.92	4	0.56
	mm	0.12	2.34	0.43	1.89	0.02	1.41	0.43	0.05	0.03	0.08	1.84	0.03	0.19	4	0.02
54	in	3.5	66.25	12	54	0.62	40.25	12	1.18	0.87	2	52.75	0.75	4.92	4	0.56
	mm	0.14	2.61	0.47	2.13	0.02	1.58	0.47	0.05	0.03	0.08	2.08	0.03	0.19	4	0.02
60	in	3.75	73	12	60	0.75	44.5	12	1.18	0.87	2	58.75	1	4.92	4	0.56
	mm	0.15	2.87	0.47	2.36	0.03	1.75	0.47	0.05	0.03	0.08	2.31	0.04	0.19	4	0.02

PMP Precision valve Company Ltd. Is a progressive supplier of current products. The features, materials of construction and dimensional data as detailed in this bulletin are intended for your reference only, and should not be relied upon unless confirmed in writing by PMP Precision Valve Co. Ltd.. Certified dimensional drawings are available upon order receipt.