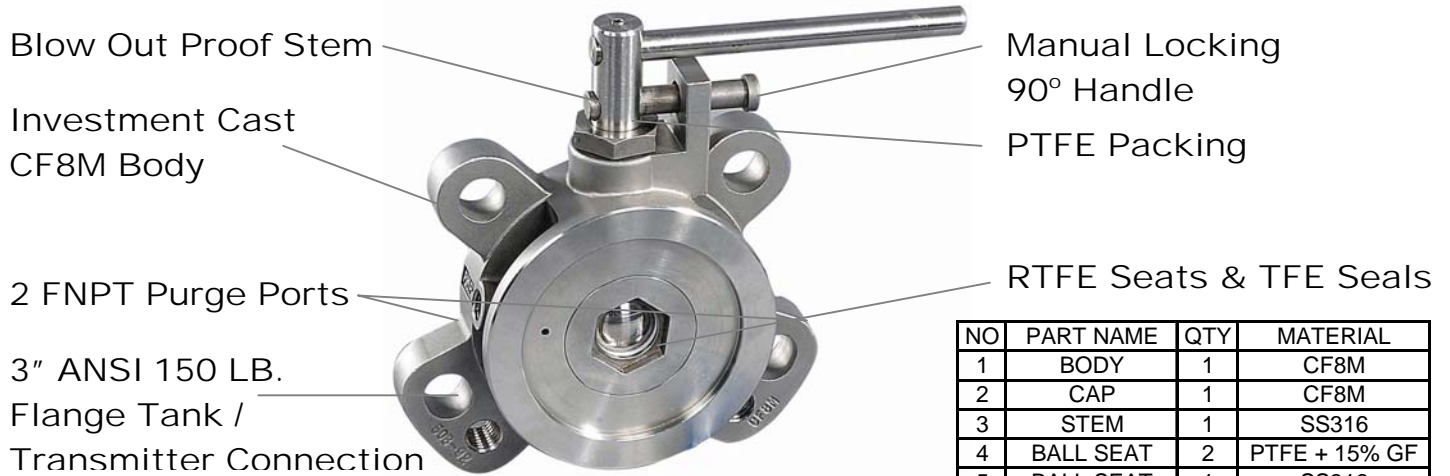




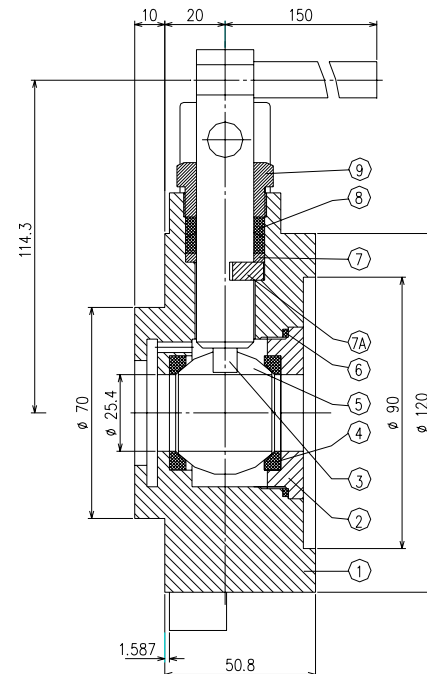
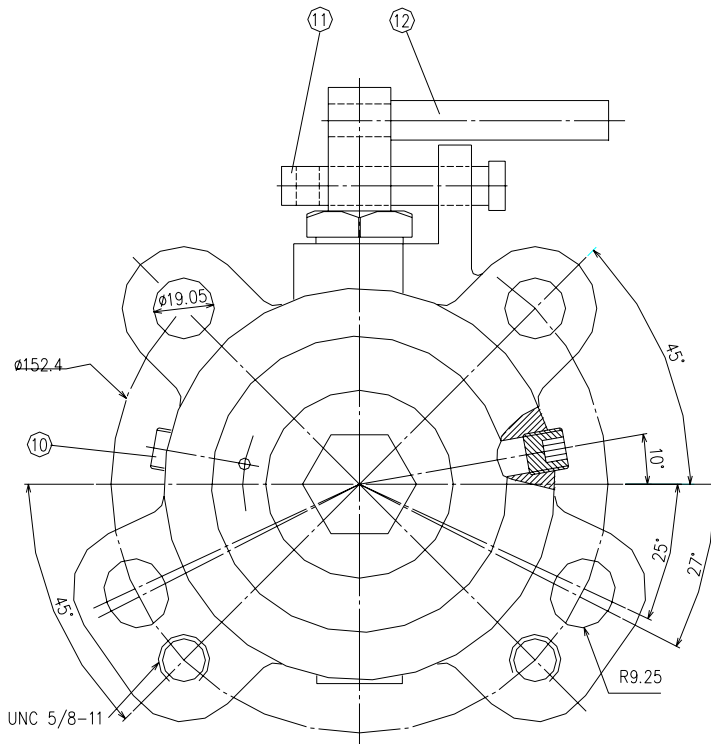
# Transmitter Isolation Valve

TIV

ANSI 150



| NO | PART NAME   | QTY | MATERIAL      |
|----|-------------|-----|---------------|
| 1  | BODY        | 1   | CF8M          |
| 2  | CAP         | 1   | CF8M          |
| 3  | STEM        | 1   | SS316         |
| 4  | BALL SEAT   | 2   | PTFE + 15% GF |
| 5  | BALL SEAT   | 1   | SS316         |
| 6  | GASKET      | 1   | PTFE          |
| 7  | GLAND       | 1   | SS316         |
| 7A | STOP PIN    | 1   | SS316         |
| 8  | PACKING     | 2   | PTFE          |
| 9  | STEM NUT    | 1   | SS304         |
| 10 | BOLT        | 2   | SS304         |
| 11 | LOCKOUT PIN | 1   | SS304         |
| 12 | HANDLE      | 1   | SS304         |



PMP Precision Valve Company Ltd. Is a progressive supplier of current products. The features, materials of construction and dimensional data as detailed in this bulletin are intended for your reference only, and should not be relied upon unless confirmed in writing by PMP Precision Valve Co. Ltd.. Certified dimensional drawings are available upon order receipt.